



Elevator Control

ZXK-CAN3200C

ZXK-CAN3200C Traction Control

Features

- NXP 32 bit ARM processor for improved reliability. Withstands up to 4000V interference
- Separate CAN ports for car and hall call to improve response time and reliability
- Includes various communication ports, including 4 CAN ports, 1 RS232 port, and 1 RS485 port
- Menu supports various languages. Easy to use and supports several levels of password protection
- Built-in clock system. Records up to 100 fault codes

Applications

- MRL elevator, machine room elevator
- Up to 48 floors
- Speed up to 4m/s
- Mid to high-rise passenger lift and freight lift
- Simplex, duplex, and up to 8 car group selective collective operation

Specifications

Input/Output Signal

| Name | Input Signal | Output Signal |
|---------------|---|------------------------------|
| Specification | DC 24V | Relay output |
| Description | 10 field programmable inputs, 2 high speed inputs | 3 field programmable outputs |
| Quantity | 34 | 18 |

Special Port

| Name | High Speed Inputs 1 | High Speed Inputs 2 |
|-------------|---|---|
| Application | Open collector signal, push-pull output signal, differential signal | Open collector signal, push-pull output signal, differential signal |

System Configuration

| Model | ZXK-CAN3200C | ZXK-CAN01D | ZXK-CAN02D | ZXK-CAN03C |
|----------|----------------|---------------------------|-------------------|-----------------------|
| Name | Microprocessor | Car operating panel board | Car call board | Hall call board |
| Quantity | 1 | 1 | 8 stops per board | 1 per floor, 1 in COP |

Communication Port

| Name | CAN Bus 1 | CAN Bus 2 | CAN Bus 3 | CAN Bus 4 |
|-------------|------------------|-----------|-----------|--------------|
| Application | Absolute encoder | Hall call | Car call | Duplex/Group |

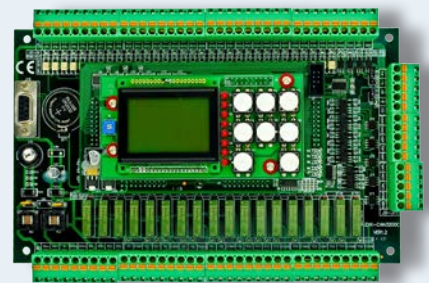
| Name | RS485 | RS232 |
|-------------|------------|-----------------|
| Application | Monitoring | Software update |

Power Supply

| Name | Power 1 | Power 2 | Consumption | Power Output |
|--------|--------------|---------------|------------------------------|---|
| Figure | DC 5V, 600mA | DC 24V, 200mA | Power 1 ≤ 3W Power 2 ≤ 5W | Output voltage = DC24V Output Current ≤ 1A |



ZXK-CAN3200C Traction Control



ZXK-CAN3200C Traction Control Board

Zhongxiu Kinetek Elevator Technology Co., Ltd. (ZXK)

27 Zhen Ze Road, Bin Hu District,
Wuxi, 214121 Jiangsu, P.R. China

direct: +86 510 85166181

fax: +86 510 85166186

hotline: 800 828 7821

email: info@zxkinc.com

www.zxkinc.com

控制柜简介

ZXK-CAN3200C

ZXK-CAN3200C电梯控制系统

产品特点

- CPU为NXP的32位高性能ARM芯片，可实现容错和检测功能，提高了系统的可靠性，抗干扰能力≥4000V
- 轿厢、井道使用2路独立CAN通讯，极大提高呼梯实时性、可靠性
- 丰富的通讯接口，4路独立CAN口，1路RS232，1路RS485
- 多语种菜单选择，操作方便简洁，分级密码保护，安全、可靠
- 带实时时钟，可记录100条历史故障记录的类型

适用范围

- 有机房和无机房控制
- 适用楼层：最大48层
- 最大梯速：4米/秒
- 适用于中高层客梯和货梯
- 单台电梯集选，两台并联，最大八台电梯群控

性能参数

输入/输出信号

| 名称 | 输入信号 | 输出信号 |
|----|----------------------|----------------|
| 规格 | DC 24V共阳，低电平输入有效 | 继电器常开触点输出、光耦输出 |
| 说明 | 10个多功能输入点，2个脉冲开关复用点。 | 3个多功能输出点 |
| 数量 | 34 | 18 |

特殊端口

| 名称 | 高速计数器输入1 | 高速计数输入2 |
|------|----------------------|-----------------|
| 功能用途 | 可用集电极开路信号推挽输出信号，差分信号 | 可用集电极开路信号推挽输出信号 |

系统配置

| 型号 | ZXK-CAN3200C | ZXK-CAN01D | ZXK-CAN02D | ZXK-CAN03C |
|----|--------------|------------|------------|-------------|
| 名称 | 微机控制器 | 轿内主控板 | 轿内指令板 | 外呼控制板 |
| 数量 | 1 | 1 | 每8层配1块 | 每层外呼1块，轿内1块 |

通讯端口

| 名称 | CAN Bus 1 | CAN Bus 2 | CAN Bus 3 | CAN Bus 4 |
|------|-----------|-----------|-----------|-----------|
| 功能用途 | 绝对值编码器 | 外呼通讯 | 轿厢通讯 | 并联/群控 |

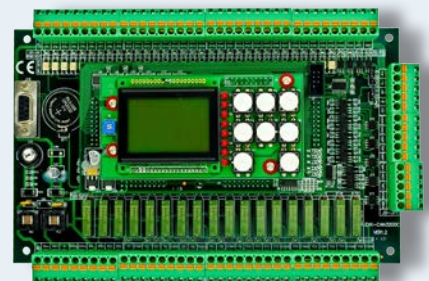
| 名称 | RS485 | RS232 |
|------|-------|---------|
| 功能用途 | 监控 | 上位机编程通讯 |

供电电源

| 名称 | 电源 1 | 电源2 | 功耗 | 输出电源 |
|----|--------------|---------------|----------------------|---------------------------|
| 数值 | DC 5V, 600mA | DC 24V, 200mA | 电源1 ≤ 3W 电源2 ≤ 5W | 输出电压 = DC24V 输出电流 ≤ 1A |



ZXK-CAN3200C电梯控制柜



ZXK-CAN3200C电梯主控制器

中秀康迪克电梯技术有限公司
地址：无锡市滨湖区震泽路27号
邮编：214121

电话：86 510 85166181
传真：86 510 85166186
服务热线：800 828 7821

email: sales@zxkinc.com
www.zxkinc.com