

## 56 Frame Offset Gear Motor

**Imperial 56 Frame Offset Gearmotors** are built to last. 56 Frame Gearmotors are rugged, designed for continuous duty over long years of use in a variety of applications. These gearmotors feature all-ball-bearing construction, 3,000 hour minimum brush life, a full-keyed shaft, and integral gearboxes.

Bi-directional operation and the ability to be face-mounted in any direction make 56 Frame Gearmotors a great choice for floor care, electric vehicle, pump, hoist, landscape care, and general purpose applications. 56 Frame Gearmotors are flexible, power drive units in compact packages – producing more horsepower than equivalent non-gearbox designs.



### Specifications

- 115/230 VAC rectified, 36 and 24V DC
- 0.75 to 1.5 hp — 0.6 to 1.1 kW
- 13 - 26 ft/lbs (18 - 35 Nm) torque range
- 165 - 340 rpm shaft output
- 3,000 hour minimum brush life
- Ambient temperature 40° C
- Insulation Class F
- 5.2:1 and 7:1 gear ratios available

### Features

- UL and CSA listed
- Long operating life
- Full-keyed shaft
- Integral, aluminum alloy gearbox
- Face mount in any direction
- Operates in both directions
- Continuous duty

### Applications

- Commercial floor care equipment
- Electric vehicles
- Pumps
- Hoists
- Landscape care
- General purpose



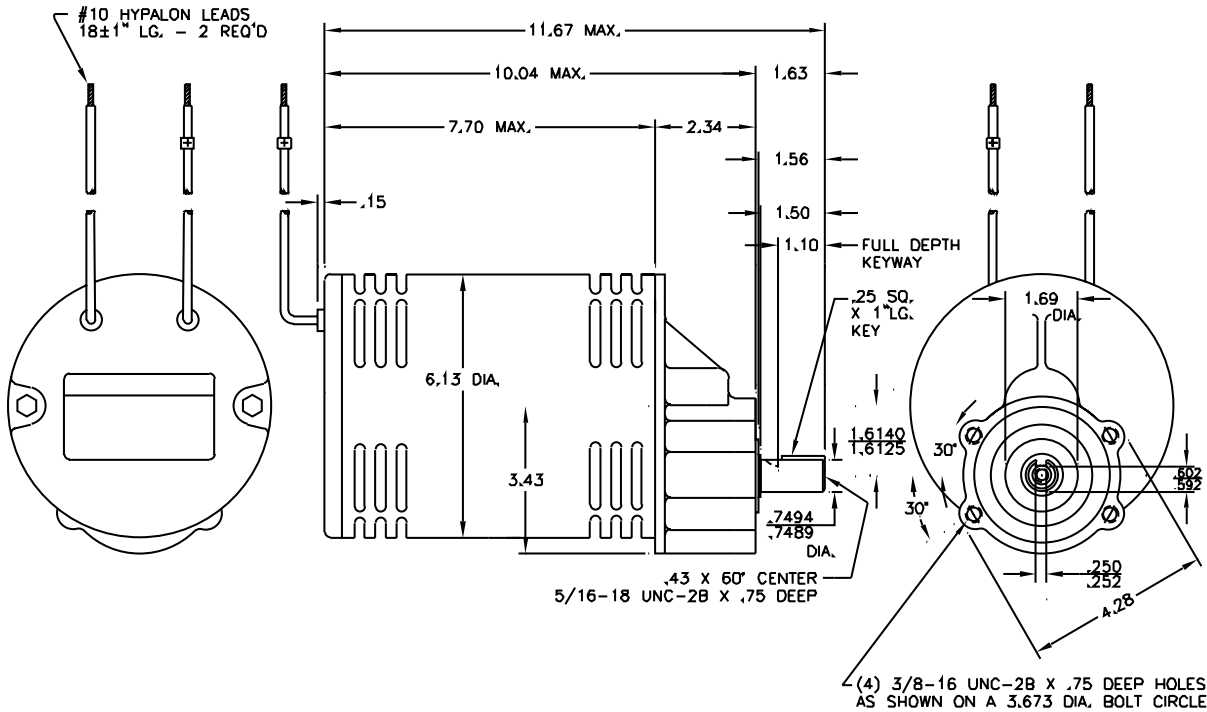
**KINETEK®**

*Technology in Motion*

**KJH (Kinetek Jinghe)**  
+86.20.6683.5476 direct  
yingye@jinghechina.com  
jinghechina.com

**US Sales Office**  
sales@kinetekinc.com  
kinetekinc.com

## Dimensions



## Model Specifications

Model	Volts	HP	kW	RPM	Hz	Amps	Gear Ratio	Output Shaft		Rotation	Connection	Enclosure	Mount	Weight	
								Inches	mm					lbs	kg
P56 SG 616	*230	0.75	0.6	250	50/60	3.8	5.2:1	0.750	19.1	Both	Leads	**Open-GD	Face	28	12.7
P56 SG 614	*115	0.75	0.6	250	50/60	7.2	5.2:1	0.750	19.1	Both	Leads	**Open-GD	Face	28	12.7
P56 SG 600	36	0.75	0.6	200	DC	22	5.2:1	0.750	19.1	Both	Leads	**Open-GD	Face	26	11.8
P56 SG 628	36	0.75	0.6	300	DC	22	5.2:1	0.750	19.1	Both	Leads	**Open-GD	Face	26	11.8
P56 SG 617	36	1.00	0.7	300	DC	30	5.2:1	0.750	19.1	Both	Leads	**Open-GD	Face	25	11.3
P56 SG 623	36	1.00	0.7	200	DC	28	5.2:1	0.750	19.1	Both	Leads	**Open-GD	Face	28	12.7
P56 SG 601	24	0.75	0.6	200	DC	33	5.2:1	0.750	19.1	Both	Leads	**Open-GD	Face	26	11.8
P56 SG 613	24	0.75	0.6	270	DC	35	5.2:1	0.750	19.1	Both	Leads	**Open-GD	Face	25	11.3
P56 SG 618	24	1.00	0.7	200	DC	42	5.2:1	0.750	19.1	Both	Leads	**Open-GD	Face	28	12.7
P56 SG 625	24	0.75	0.6	165	DC	33	5.2:1	0.750	19.1	Both	Leads	**Open-GD	Face	28	12.7
P56 SG 627	24	1.00	0.7	340	DC	44	5.2:1	0.750	19.1	Both	Leads	**Open-GD	Face	26	11.8

\* Suitable for 115V and 230V AC with rectifier.

\*\* Open-GD: Open-Guarded enclosures



## KINETEK®

Technology in Motion

**KJH (Kinetek Jinghe)**  
 Zhongxing Industrial Zone,  
 Pingshan approach of 105th National Road  
 Zhongcun town of Panyu District  
 Guangzhou, China  
 +86.20.6683.5476 direct  
 +86.203.4716.922 fax  
 yingye@jinghechina.com  
 jinghechina.com

**US Sales Office**  
 1503 Exeter Rd.  
 Akron, OH 44306  
 sales@kinetekinc.com  
 kinetekinc.com